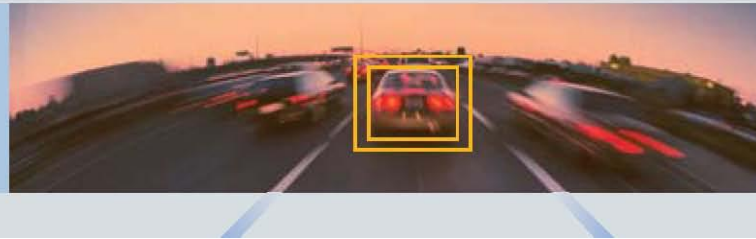


MOBILEYE 6®

Our Vision. Your Safety.™



Technical Specification Sheet

| Mobileye 6 Main unit | |
|---|---|
| Physical Characteristics | |
| Length: | 122mm |
| Width (without lens): | 79mm |
| Height: | 43mm |
| Weight: | 200g |
| Color: | Black |
| Case Material: | Aluminum/plastic |
| Cable Length: | 3m |
| Cable Diameter: | 4.8mm |
| Electrical Characteristics | |
| Input Voltage: | 12-28VDC |
| Input current: | 12v → 220mA, 24v → 120mA |
| Environmental Characteristics | |
| Operating Temperature: | -20°C to +85°C |
| Storage Temperature: | -40°C to +105°C |
| Vision Sensor | |
| Vision Sensor: | Aptina MT9V024 (1/3") RCC |
| Array Format: | Total: 752H x 480V - Active pixels: 640H x 480V |
| Optical Format: | 1/3" |
| Pixel Size: | 6.0µm x 6.0µm |
| Dynamic Range: | >55dB linear; >100dB in HDR mode |
| Shutter type: | Global shutter—TrueSNAP™ |
| Responsivity: | 4.8 V/lux sec (550nm) |
| Angle of view: | 38° (horizontal) |
| Focus range: | 5m to infinity |
| AGC: | Automatic Gain Control of the image sensor for high dynamic range |
| Audio Buzzer | |
| SPL Minimum | 86dB @ 10cm |
| EyeQ2® Vision Processor | |
| 332 MHz clock rate running seven parallel processes | |
| Two MIPS24KF 32bit CPUs | |
| Eight 64bit Vision Computing Engines (VCE) | |
| Eight channels DMA | |
| 64bit width 512KB on-chip SRAM | |

| EyeWatch Display Unit | |
|--------------------------------|-------------------------------|
| Physical Characteristics | |
| Diameter: | 49mm |
| Depth: | 24mm |
| Depth (leg closed): | 29mm |
| Depth (leg open): | 66mm |
| Weight: | 46g |
| Color: | Black |
| Case Material: | Plastic |
| Cable Length: | 3m |
| Cable Diameter: | 3.1mm |
| Electrical Characteristics | |
| Input Voltage: | 5VDC |
| Input Current: | 500mA |
| Environmental Characteristics | |
| Operating Temperature: | -20°C to +80°C |
| Storage Temperature: | -40°C to +100°C |
| Operating Humidity: | 95% |
| Display Characteristics | |
| Viewing Angle: | 100 Deg. |
| Display colors (backlighting): | LCD Full Color - 40 mcd (min) |
| Resolution: | 128x128 pixels |

| Electrical Characteristics | |
|--------------------------------|--------------------------|
| Input Voltage | 12-28VDC |
| Input current (full operation) | 12v → 360mA, 24v → 180mA |
| Input current (Stand-By Max) | 12v → 10µA, 24v → 10µA |
| Max Power Consumption | 5.2W |

Mobileye®
Our vision. Your Safety™
www.mobileye.com

Mobileye Technologies Limited. All rights reserved 11/2014.

Mobileye®, SeeQ® and EyeQ® are trademarks of

Mobileye Technologies Limited.

Specifications are subject to change without notice