



SPOTTO™
BLIND SPOT RADAR

USER GUIDE

Congratulations on purchasing the Spotto Blind Spot Radar for your truck. With Spotto on your side, you'll be more aware of objects in your truck's blind spots and have greater confidence when changing lanes or navigating turns.

Please read this user guide carefully and familiarise yourself with the system's functions as it may differ to other systems you might have previously driven with.

IMPORTANT

The Spotto Blind Spot Radar is a driver aid only. As with all technology, it cannot guarantee 100% accuracy or performance at all times. The system should not be solely relied upon and is not intended to replace usual driving practice or driver vigilance and responsibility.

The Spotto Blind Spot Radar is mounted to the side of the truck and incorporates advanced microwave technology that detects objects alongside the truck - including:

- All types of vehicles
- Motorcycles
- Cyclists
- Pedestrians
- Road infrastructure such as poles, barriers and guard rails.



Spotto's intelligent algorithms are able to identify whether an object is stationary or moving, including its speed and distance from the truck.

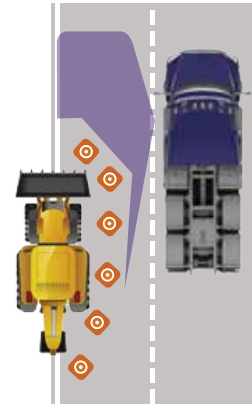
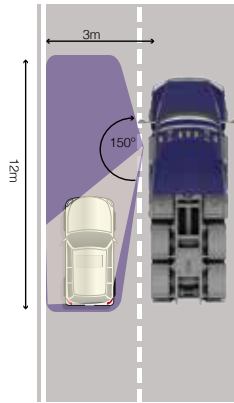


The Blind Spot Indicator is fitted at the A-pillar and in direct line-of-sight when checking the side mirror.

When Spotto senses an object in the detection zone, the Blind Spot Indicator will illuminate, and remain illuminated until the detection zone is clear.

If the vehicle's turn signal indicator is activated, the Blind Spot Indicator will flash and emit a simultaneous audible alert.

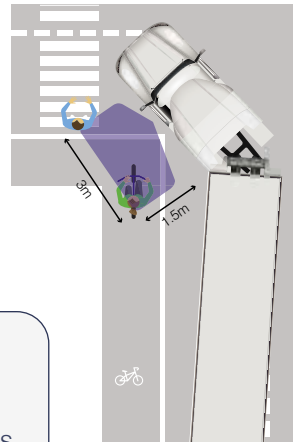
At speeds **above 30km/h** Spotto's detection zone reaches **3m** into the adjacent lane and up to **12m** alongside the truck and forward of the bonnet.



In this mode, Spotto focuses on detecting moving objects, like vehicles, motorcycles and cyclists and will aim to ignore the stationary objects, such as parked cars or guard rails, to minimise false alerts.

At speeds **below 30km/h** Spotto's Turn-Assist detection zone reduces to **1.5m x 3m**, alerting the driver to all objects, both moving & stationary.

This mode proves most beneficial when turning at intersections or maneuvering in the yard, when pedestrians and cyclists could be in the truck's blind areas.



IMPORTANT

Spotto calculates driving speed via a GPS receiver attached to the windshield. Do not cover the GPS receiver. If GPS signal is unavailable, Spotto assumes the operating mode for speed above 30km/h.

Speed	Detection Zone	What's detected	Object in Detection Zone?	Truck's Turn Signal Indicator	Blind Spot Indicator	Blind Spot Audible Alert
Below 30km/h	1.5m x 3m	All objects. Stationary & moving. Includes pedestrians and cyclists	NO	OFF	OFF	NO
				ON	OFF	NO
			YES	OFF	ON	NO
				ON	FLASH	YES
Above 30km/h	3m x 12m	Moving objects only	NO	OFF	OFF	NO
				ON	OFF	NO
			YES	OFF	ON	NO
				ON	FLASH	YES

Product Warranty

Without prejudice to any statutory warranty to which the owner may be entitled under the Australian Consumer Law and unless such law provides for a longer term:

The Product Warranty (the “Express Warranty”) covers the owner of the Product(s) against defects in material for a period of **three (3) years from the Invoice date**.

Proof of original purchase may be required from the warranty holder to obtain Express Warranty coverage. The sole obligation of 1800CARKIT Pty Ltd under this Express Warranty is to repair or replace, at its option, any Product, which is determined by 1800CARKIT Pty Ltd to have been defective.

How to make a Warranty claim: FREECall 1-800-227 548 from anywhere in Australia

The following are excluded from the Express Warranty:

1. Product(s) or installation of Product(s) that have been damaged from misuse, negligence, accident or removal by any person that is not an authorised representative of 1800CARKIT Pty Ltd.
2. Product(s) that have been installed or used in a vehicle other than the vehicle for which the Product was allocated.
3. Product(s) that have been repaired, modified or altered by any party other than an authorised representative of 1800CARKIT Pty Ltd
4. Product(s) that are not the Products sold or installed by 1800CARKIT Pty Ltd or an authorised representative of 1800CARKIT Pty Ltd
5. Product(s) that have been used other than in accordance with the associated Product Instructions or documentation provided by 1800CARKIT Pty Ltd.

EXPRESS WARRANTY DISCLAIMER

This Warranty and the statutory warranties provided under the Australian Consumer Law are the sole and exclusive warranties applicable to the Product(s). 1800CARKIT Pty Ltd and any authorised representatives disclaim all other express warranties of merchantability and fitness for a particular purpose, to the fullest extent permitted by applicable law. No representation or warranty of any kind or nature is made by 1800CARKIT Pty Ltd or any other authorised representative beyond those expressly stated herein or which are provided under the Australian Consumer Law. To the fullest extent permitted by law, including the Australian Consumer Law neither 1800CARKIT Pty Ltd nor any other authorised representative shall be liable for any special, collateral, indirect, punitive, incidental, consequential, or exemplary damages in connection with or arising out of the use of the Product. Without limiting any provisions limiting liability under this Agreement but subject to any rights under the statutory warranties provided under the Australian Consumer Law, the warranty set forth herein will not apply if:

- (i) the Product has been used other than in accordance with this express warranty, the product Instructions and documentation or other written operating instructions or has been subject to negligence or accident by anyone other than 1800CARKIT Pty Ltd or any other authorised representative or product or parts identification labels are removed or altered; or
- (ii) the Product has been modified, repaired, serviced, maintained or altered by anyone other than 1800CARKIT Pty Ltd or an authorised representative of 1800CARKIT Pty Ltd; or
- (iii) the Product has been combined with software, hardware or other equipment not supplied by 1800CARKIT Pty Ltd, any other authorised representative
- (iv) the Product has been installed not in accordance with the Installation Standards provided by 1800CARKIT Pty Ltd, or any other authorised representative; or
- (v) the Product has been damaged by causes beyond the control of 1800CARKIT Pty Ltd, or any other authorised representative; or
- (vi) the Product has been modified without 1800CARKIT Pty Ltd's written consent; or
- (vii) used by a person other than (i) the original purchaser or (ii) any other person who is authorised by the actual original purchaser